

UNIVERSITY HEIGHTS NO. 2

A SUBDIVISION OF A PART OF THE CITY OF BOULDER
BOULDER COUNTY, COLORADO
BEING A PART OF THE NE 1/4 OF SECTION 31, AND A PART OF THE
NW 1/4 OF SECTION 32, ALL IN T1N, R70W, 6TH P.M.

-DEDICATION-

-MAYOR'S CERTIFICATE-

RED FOR EASEMENTS:
SERVICE CO. OF COLORADO
TAIN STATES TEL. & TEL. CO.
DIRECTOR OF PUBLIC SERVICE

KNOW ALL MEN BY THESE PRESENTS:

THAT THE UNDERSIGNED, UNIVERSITY HEIGHTS DEVELOPMENT CO., A CORPORATION ORGANIZED AND EXISTING UNDER AND BY VIRTUE OF THE LAWS OF THE STATE OF COLORADO, IS THE OWNER OF THAT REAL PROPERTY SITUATE IN THE COUNTY OF BOULDER, STATE OF COLORADO, AND LYING WITHIN THE EXTERIOR LINES OF UNIVERSITY HEIGHTS NO. 2, A SUBDIVISION OF A PART OF THE CITY OF BOULDER, AS SHOWN BY THE ACCOMPANYING PLAT

THAT THE SAID UNIVERSITY HEIGHTS DEVELOPMENT CO. HAS CAUSED SAID REAL PROPERTY TO BE LAID OUT AND SURVEYED AS UNIVERSITY HEIGHTS NO. 2, A SUBDIVISION OF A PART OF THE CITY OF BOULDER.

THAT ALL EXPENSES INVOLVING NECESSARY IMPROVEMENTS FOR WATER MAINS, SANITARY SEWER MAINS, STORM SEWER MAINS, GAS SERVICE, ELECTRICAL SERVICE, CURB AND GUTTERS, SIDEWALKS, STREET PAVEMENT, GRADING AND LANDSCAPING SHALL BE FINANCED BY THE PURCHASER OR SELLER—NOT THE CITY OF BOULDER.

THAT THE SAID UNIVERSITY HEIGHTS DEVELOPMENT CO. DEDICATES AND SETS APART ALL OF THE STREETS AS SHOWN ON THE ACCOMPANYING PLAT TO USE OF THE PUBLIC FOREVER, AND HEREBY DEDICATES THOSE PORTIONS OF SAID REAL PROPERTY WHICH ARE LABELED AS EASEMENTS ON THE ACCOMPANYING PLAT AS EASEMENTS FOR THE INSTALLATION AND MAINTENANCE OF TELEPHONE AND ELECTRIC LINES, POLES AND UNDERGROUND CABLES, GAS PIPE LINES, SANITARY SEWER LINES, STORM SEWER LINES, AND WATER PIPE LINES.

THAT ALL EXPENSES INVOLVING NECESSARY IMPROVEMENTS FOR WATER MAINS, SANITARY SEWER MAINS, STORM SEWER MAINS, GAS SERVICE, ELECTRICAL SERVICE, CURB AND GUTTERS, SIDEWALKS, STREET PAVEMENT, GRADING AND LANDSCAPING SHALL BE FINANCED BY THE PURCHASER OR SELLER—NOT THE CITY OF BOULDER.

IN WITNESS WHEREOF, THE SAID UNIVERSITY HEIGHTS DEVELOPMENT CO. HAS CAUSED ITS CORPORATE NAME TO BE HERETO SUBSCRIBED BY ITS PRESIDENT, AND ITS CORPORATE SEAL TO BE HERETO AFFIXED, ATTESTED BY ITS SECRETARY. ALL NAMES AND SEALS AFFIXED THIS 2nd DAY OF June A.D. 1955

UNIVERSITY HEIGHTS DEVELOPMENT CO.

By Byron L. Wells
PRESIDENT

By William V. Aspinwall
SECRETARY

STATE OF COLORADO ss.
COUNTY OF BOULDER

THE FOREGOING INSTRUMENT WAS ACKNOWLEDGED BEFORE ME THIS 2nd DAY OF June A.D. 1955 BY BYRON L. WELLS AS PRESIDENT AND WILLIAM V. ASPINWALL AS SECRETARY OF UNIVERSITY HEIGHTS DEVELOPMENT CO., A CORPORATION.

MY COMMISSION EXPIRES THE 20 DAY OF August A.D. 1958.

WITNESS MY HAND AND SEAL

By Melvin H. McLean
NOTARY PUBLIC

THIS IS TO CERTIFY THAT THE CITY OF BOULDER, A MUNICIPAL CORPORATION IN THE COUNTY OF BOULDER, STATE OF COLORADO, BY JOHN D. GILLASPIE, ITS MAYOR DULY AUTHORIZED THEREFORE, BY RESOLUTION OF THE CITY COUNCIL OF THE CITY OF BOULDER ON THE 24th DAY OF June A.D. 1955, HEREBY ADOPTS THIS PLAT UPON WHICH THIS CERTIFICATE IS ENDORSED, FOR THE PURPOSE INDICATED THEREON.

IN WITNESS WHEREOF, THE SAID CITY OF BOULDER HAS CAUSED ITS SEAL TO BE SUBSCRIBED BY ITS MAYOR, THIS 24th DAY OF June A.D. 1955.

ATTEST: Leonard K. Ross
DIRECTOR OF FINANCE AND RECORD
AND EX-OFFICIO CITY CLERK

John D. Gillaspie
MAYOR

-PLANNING COMMISSION CERTIFICATE-

APPROVED THIS 2nd DAY OF June A.D. 1955. CITY PLANNING BOARD OF THE CITY OF BOULDER, COLO.

Harold W. Platt
CHAIRMAN

-CLERK AND RECORDER'S CERTIFICATE-

STATE OF COLORADO ss. 558343

I HEREBY CERTIFY THAT THIS INSTRUMENT WAS FILED IN MY OFFICE AT 11:00 O'CLOCK P.M. THIS 23 DAY OF June A.D. 1955, AND IS DULY RECORDED IN PLAT BOOK 6 AT PAGE 37.

DEPUTY

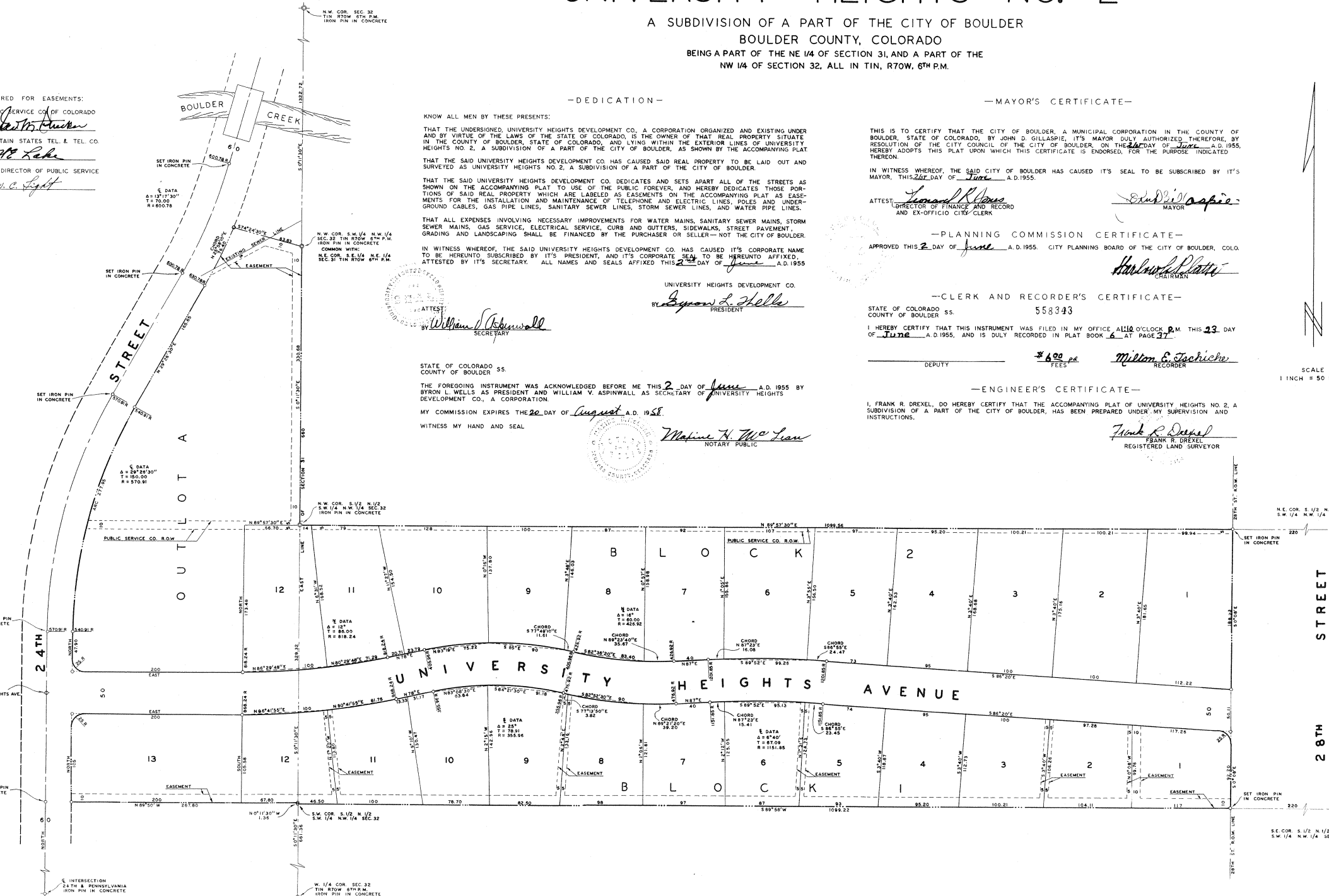
\$ 6.00 per FEES

Milton E. Tschichow
RECORDER

-ENGINEER'S CERTIFICATE-

I, FRANK R. DREXEL, DO HEREBY CERTIFY THAT THE ACCOMPANYING PLAT OF UNIVERSITY HEIGHTS NO. 2, A SUBDIVISION OF A PART OF THE CITY OF BOULDER, HAS BEEN PREPARED UNDER MY SUPERVISION AND INSTRUCTIONS.

Frank R. Drexel
FRANK R. DREXEL
REGISTERED LAND SURVEYOR



N.E. COR. S. 1/2 N. S.W. 1/4 N.W. 1/4 S.

S.E. COR. S. 1/2 N. 1/2 S.W. 1/4 N.W. 1/4 S.

28TH ST. ROW LINE

28TH ST. ROW LINE

28TH ST. ROW LINE

28TH ST. ROW LINE

28TH ST. ROW LINE